



How It Works

The Track Stick receives signals from twenty-four satellites orbiting the earth. With this data, the Track Stick can precisely calculate its own position to within fifteen meters. An on-board computer records this information at preset intervals.

Where It Works

The Track Stick will work anywhere on the planet Earth. Using the latest in GPS mapping technologies, your exact location can be shown on graphical maps and three dimensional satellite images.

www.TrackStick.com



Track Stick Features

- Low Power Operation
- 16 Channel GPS Receiver
- Integrated USB Port
- Output compatible with third party mapping programs including:

Mapquest.com

VirtualEarth.com

Maps.Google.com

Microsoft Streets and Trips

Dimensions: **4.10" X 1.20" X 0.87"**

Weight: **1.5 oz.**

Capacity: **1.0 Mb**

Connectivity: **USB 1.1**

Max. # of satellites: **12**

Receiving Signal: **L1 (1575.42 MHz)**

Horizontal Accuracy: **15 meters**

Power: **2 AAA batteries**

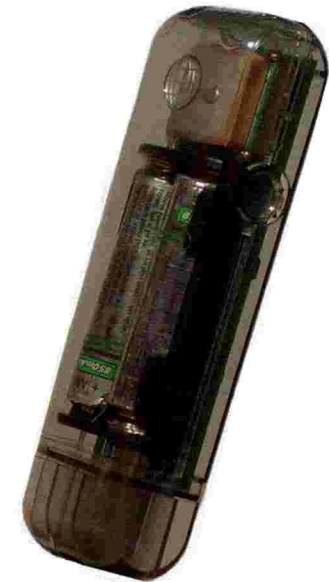
Consumption: **< 5mA in Low Power Mode**

Duration: **5-7 days of typical operation**

Telespial Systems

For more information:
www.TrackStick.com

E-mail: info@trackstick.com

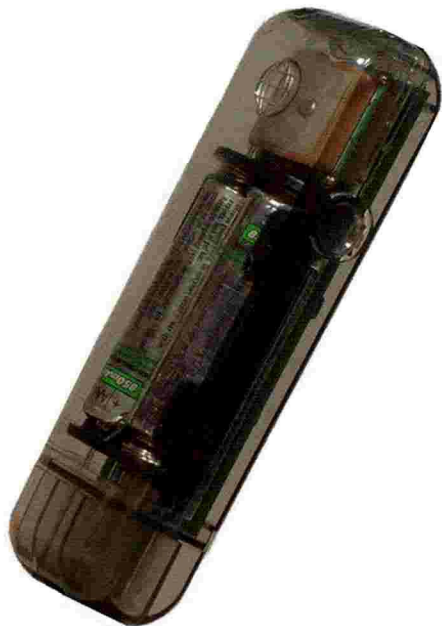


**Product
Information**



TrackStick

follow its every move .com



The Track Stick records its own time, date, location, speed, direction and altitude at preset intervals. With over one Mb of memory, it can store months of travel information. All histories can be outputted to the following formats:

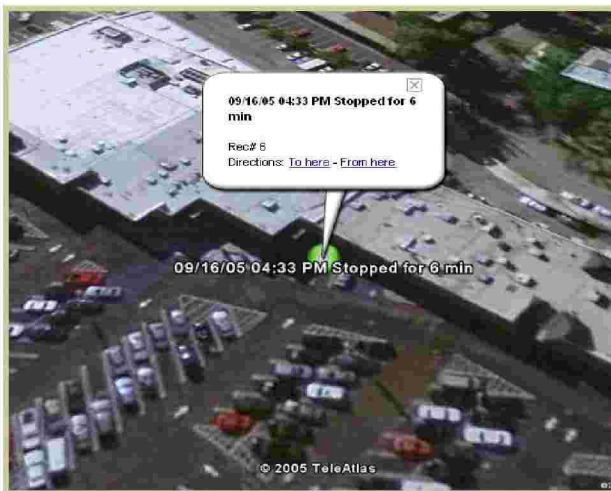
- RTF (Text files with HTML map links)
- XLS (Microsoft Excel Spread Sheets)
- HTML (Webpage with graphics and maps)
- KML (Interfacing with Google Earth)

Detailed Travel Histories

The Track Stick is the first personal GPS location recorder that uses the latest mapping technologies to show you exactly where it has been. All recorded information can be downloaded to any Windows computer through the integrated USB port for later review. These detailed file formats can be emailed and analyzed on any computer connected to the Internet. There is no need for any special software or mapping programs to see where the Track Stick has been.

Beautiful 3D Images

Mapping technologies have come a long way since simple traces on outdated computer maps. The Track Stick uses the latest 3D mapping technologies available today. Driving directions, satellite images and local information is always a mouse click away from where the Track Stick has been.



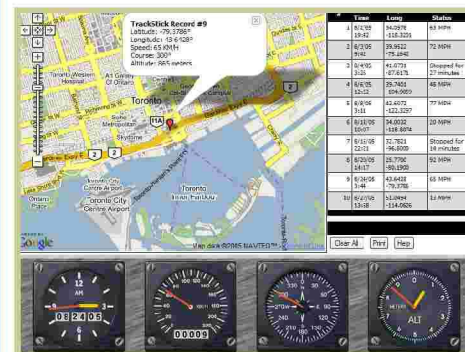
The Track Stick outputs KML for satellite imaging and mapping with Google Earth. Visit Earth.Google.com for more information on this free satellite imaging program.

What Can Track Stick Do?

- Find where your kids have been
- Verify employee driving routes
- Review family members driving habits
- Watch large shipment routes
- Know where anything or anyone has been*

HTML Mapping

The Track Stick can be pre-programmed to record at preset intervals. The easy to use graphical interface allows the user to sort and output only the travel information that is needed.



Graphical mapping can be emailed to anyone for detailed analysis.

Telespial Systems

For more information:
www.TrackStick.com

E-mail: info@trackstick.com

* It is illegal to track someone without their knowledge.