

YapperBox and Amy v1.3 User Manual



Welcome to YapperBox and Amy

Howdy, fellow Yapper. If your friends happen to call you “motormouth” from time to time or even if you have lost all your friends because they simply could not understand your vocal genius, then we welcome you with open arms.

We know how important talk really is. Other people might write it off as Yapping but to us it is a way of life. We welcome you to the babbling ranks of Yappers, and we earnestly hope that with YapperBox, you will never have to hang up that phone again.



Table of Contents



Installation Procedures

Package Contents	4
Hardware Installation	4
Skype Installation	5
Software Installation	6
Double-Check Sound Settings	7
Software Removal	8

Using YapperBox

Dialing Regular Calls	9
Dialing Skype Contacts	9
Dialing SkypeOut Calls	10
Receiving Calls	11
Call-Waiting	12

Using Amy

Connection Status	13
Checking Voicemail	13
Sending a Delayed Message	14
Voicemail Options	15
Morning Call	16

More Questions?	17
------------------------------	-----------

Installation Procedures

(a) Package Contents

1. One black YapperBox unit.
2. One USB connector cable.
3. One RJ11 telephone line.



(b) Hardware Installation (1 min)

Step 1: Plug in the USB Connector



Step 2: Plug in your Phone Set



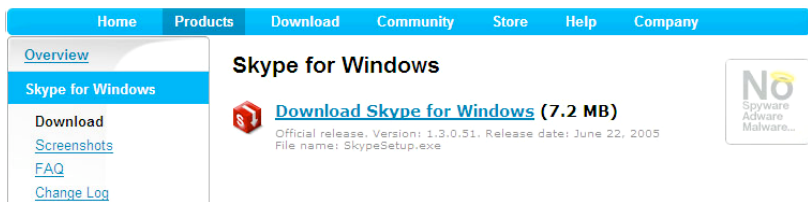
Step 3: Plug in the Home or Office Telephone Line



(c) Skype Installation (3 min)

Step 1: Download Skype

Go to www.Skype.com, and click on **Download** button. Then, click on **Windows** to go to the following page.

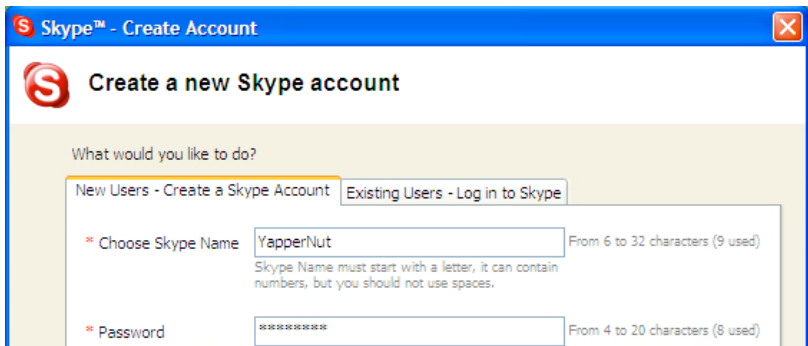


The screenshot shows the Skype website's navigation bar with links for Home, Products, Download, Community, Store, Help, and Company. The 'Download' section is active, showing 'Skype for Windows' with a download button for the 7.2 MB installer. Below the button, it states 'Official release. Version: 1.3.0.51. Release date: June 22, 2005. File name: SkypeSetup.exe'. A 'No Spyware Adware Malware...' badge is visible on the right. A sidebar on the left contains links for Overview, Skype for Windows, Download, Screenshots, FAQ, and Change Log.

YapperBox only supports Windows 2000 and XP. Download Skype for Windows in any folder, and run the Skype Installer.

Step 2: Create a Skype Account

After the Skype Setup Wizard has completed, a Create Account screen will appear. Choose a new screen name for yourself or use an existing screen name if you already have one.



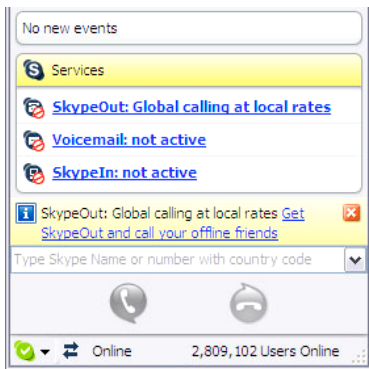
The screenshot shows the 'Skype™ - Create Account' window. The title bar says 'Skype™ - Create Account'. The main heading is 'Create a new Skype account'. Below this, there are two tabs: 'New Users - Create a Skype Account' (selected) and 'Existing Users - Log in to Skype'. The 'New Users' tab contains two input fields: 'Choose Skype Name' with the value 'YapperNut' and a character count 'From 6 to 32 characters (9 used)'. Below the name field is a note: 'Skype Name must start with a letter, it can contain numbers, but you should not use spaces.' The second field is 'Password' with a masked value '00000000000000' and a character count 'From 4 to 20 characters (8 used)'.

Step 3: Activating SkypeOut or SkypeIn (Optional)

SkypeOut allows you to call a regular telephone with your Skype account at a very cheap rate. To learn more about SkypeOut, please visit: <http://www.skype.com/products/skypeout/>.

SkypeIn (limited to certain countries) allows your Skype account to receive calls from regular telephones. SkypeIn costs 30 Euros a year. To learn more about SkypeIn, please visit: <http://www.skype.com/products/skypein/>.

To activate SkypeOut, Skype Voicemail, and/or SkypeIn, click on **Services** in the **Contacts** page of your Skype client and follow the instructions on Skype's website.



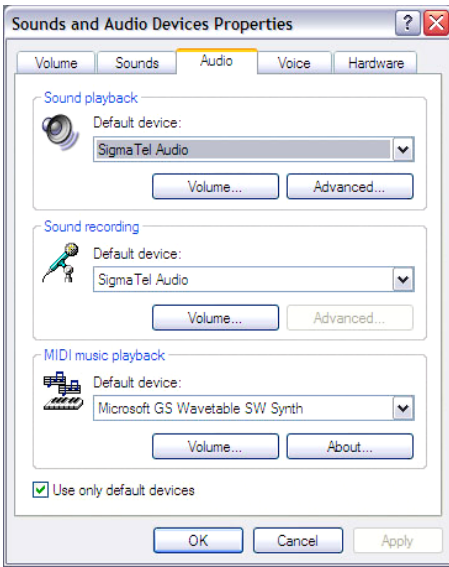
(d) Software Installation (2 min)

Go to the YapperNut home page and click on the **Amy** tab. Click on **Download**. Please note that Amy contains the hardware driver. Run the downloaded Installer, and follow its simple instructions.

(e) Double-Check Settings (3 min)

Step 1: Check Computer Sound Settings

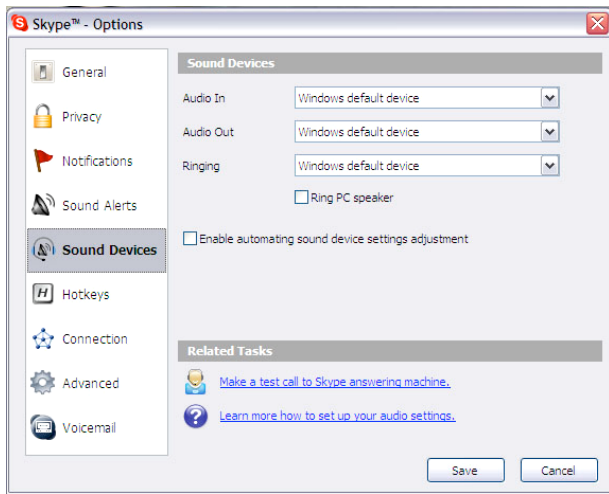
Inside **Start -> Control Panel**, go to **Sounds and Audio Devices**. Click on the **Audio** tab.



Make sure the bottom **Use only default devices** box is checked.

Step 2: Check Skype Sound Settings

Go to **Tools->Options** inside the Skype client. Click on **Sound Devices** button on the left.



Make sure the **Enable automatic sound device settings adjustment** box is unchecked. This should be the default configuration. You should only need to modify the Skype settings in case the program crashes.

RESTART YOUR COMPUTER AFTER INSTALLATION !

(f) Software Removal

Should you wish to uninstall Amy, go to **Start -> Control Panel**. Click on **Add or Remove Programs**. Find **YapperNut** in the list, and click on **Remove**.

Using YapperBox

(a) Dialing Regular Calls

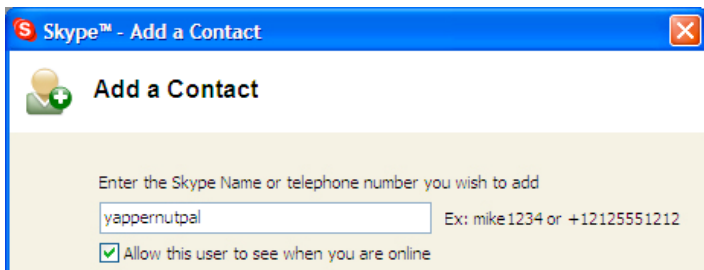


If you have attached YapperBox to the phone outlet (the optional step 3 in the hardware installation process), YapperBox connects to the landline by Default. Only by pressing **##** will YapperBox switch to Skype mode.

In the default mode simply dial as you used to in order to place a call with your regular phone carrier such as SBC or AT&T.

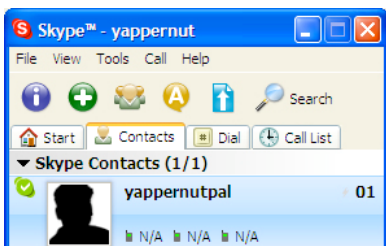
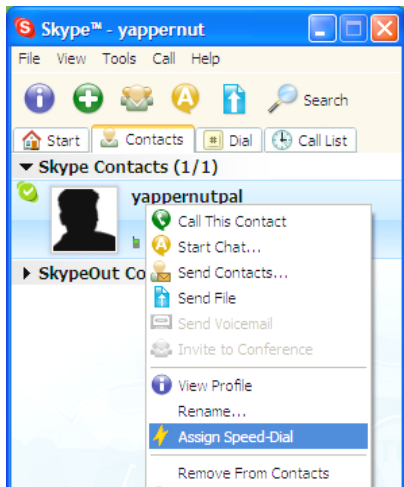
(b) Dialing Skype Contacts

In order to call a Skype buddy, you first need to add that buddy to your Skype contacts list. You can start the process by clicking the green, circular '+' button on top of the Skype client.



Type in the name of the contact that you wish to add.

Now you can view your Skype buddy online! Next, right-click on this buddy's name, click "**Assign Speed-dial**", and choose a number for this buddy. The number has to be **two digits between 01 ~ 99**.



After you have finished, there should be a number to the right of your buddy's name. Here on the right graph, the number is '01.'

To call a Skype buddy, simply dial:

##

Skype-mode

speed-dial number

call your Skype buddy

#

Finish

Remember that speed-dial numbers are always **two digits**. In this example, to call yappernutpal, you would dial

##

01

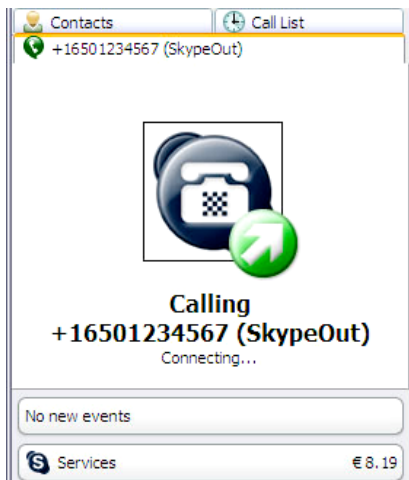
#

(c) Dialing SkypeOut Calls

To call a regular phone through Skype, you need to buy SkypeOut credits. Please refer to Step 4 in Skype Installation.



After you purchase these credits, Skype will show your remaining SkypeOut credits on the bottom. Here the balance is 8.19 Euros.



Now to call a regular phone through SkypeOut, simply dial:

<u>##</u>	<u>00</u>	<u>phone number</u>	<u>#</u>
Skype-mode	use SkypeOut	call the other party	finish

For example, if you wish to the number '1 (650) 123-4567' to reach Stanford, California, you will need to enter:

<u>##</u>	<u>00</u>	<u>16501234567</u>	<u>#</u>
-----------	-----------	--------------------	----------

(d) Receiving Calls

YapperBox can receive calls from (i) regular phones, (ii) Skype contacts, or (iii) Skypeln.

(e) Call-Waiting

Continuous Beeps: a Skype call is waiting to be answered.

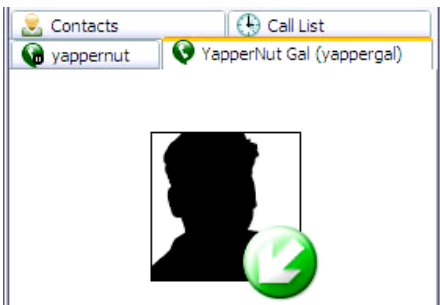
Intermittent Beeps: a regular phone call is waiting to be answered.

Case 1: Hang Up Current Call

If you hang up the current call, the held call will ring your phone.

Case 2: Hold Current Call

If you press **, you will hold the current call and switch to the held call.



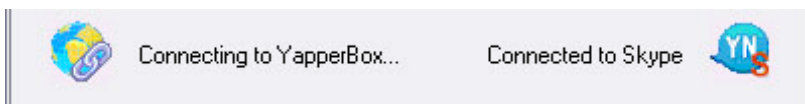
Please note that you will not be able to hold a regular phone call. Pressing ** will automatically hang up the call.

Using Amy

Once again, please note that Amy contains the hardware driver along with other features. Please check frequently for updates.

(a) Connection Status

On the bottom of the Amy, you will find two icons indicating the connection status. Both YapperBox and Skype have to be connected for the device to work properly.

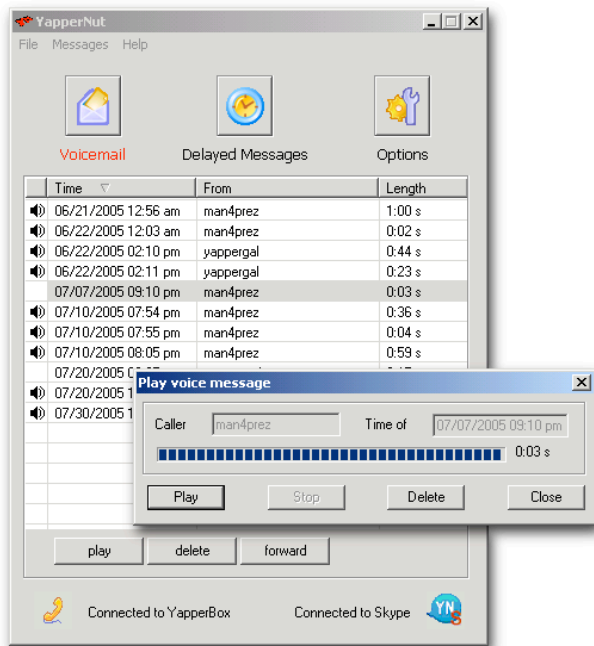


(b) Checking Voicemail

Click the **Voicemail** button on the top. To play a message, select a message, then press **play**. The playback window will pop up.

The first column in the Voicemail window indicates whether a message has been heard or not. If the entire message has been played once, the icon will disappear.

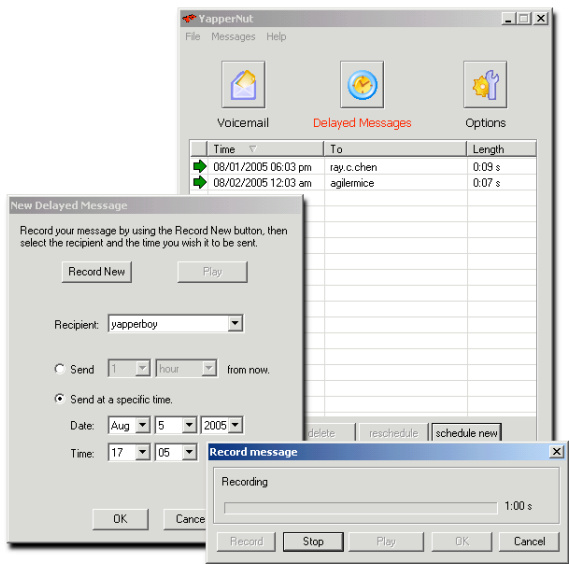
The second column shows the time of the recording. The third column shows who recorded the message. The last column shows the duration of the message. You can sort messages in any column.



(c) Sending a Delayed Message

Click the **Delayed Message** button on the top. To record a new delayed message, press **schedule new**. Then press **Record New** to record your message. Select the recipient of your delayed message, selected the time you wish your recipient to receive your message, and press **OK** to finish.

The first column in the Voicemail window indicates whether a message has been sent or not. A green arrow appears until the message is sent.

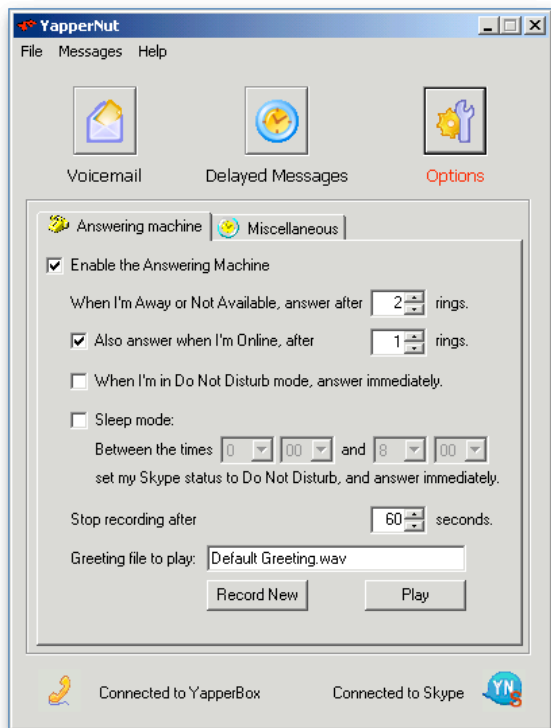


(d) Voicemail Options

Click on the **Options** button on the top. In the **Answering Machine** tab, you can turn the Voicemail on or off. You can also tell Amy to pick up after different numbers of rings for different Skype statuses.

Sleep Mode allows Amy to set the Skype status to “Do Not Disturb” and immediately answer any incoming calls.

You can prevent runaway recordings by setting the maximum duration for each message, and you can record your own greeting by pressing **Record New** on the bottom.



(e) Morning Call

You can set a hotel-like morning call by going to the **Miscellaneous** tab under **Options**, checking **Enable wake up call**, and setting a time for the morning call.

Still Have Questions?

Guides to Skype can be found at <http://www.skype.com/help/guides/>

For general questions, please contact customers@yappernut.com, and we will try our very best to answer your questions.

To report technical problems, please email bugs@yappernut.com.