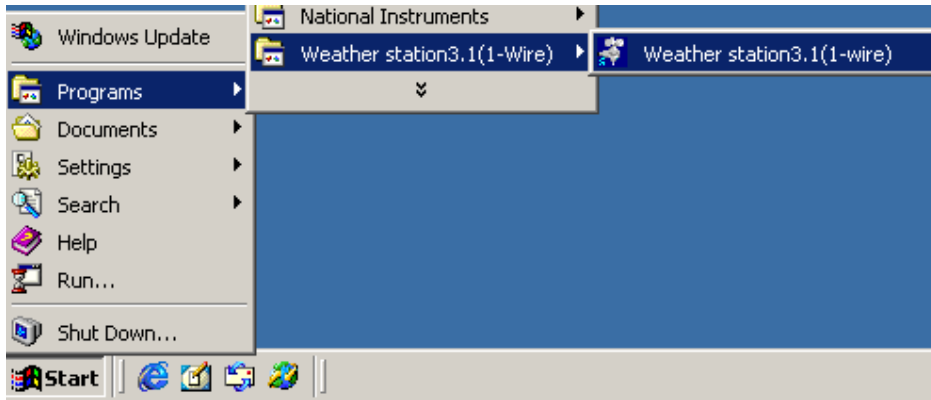


How to use the software

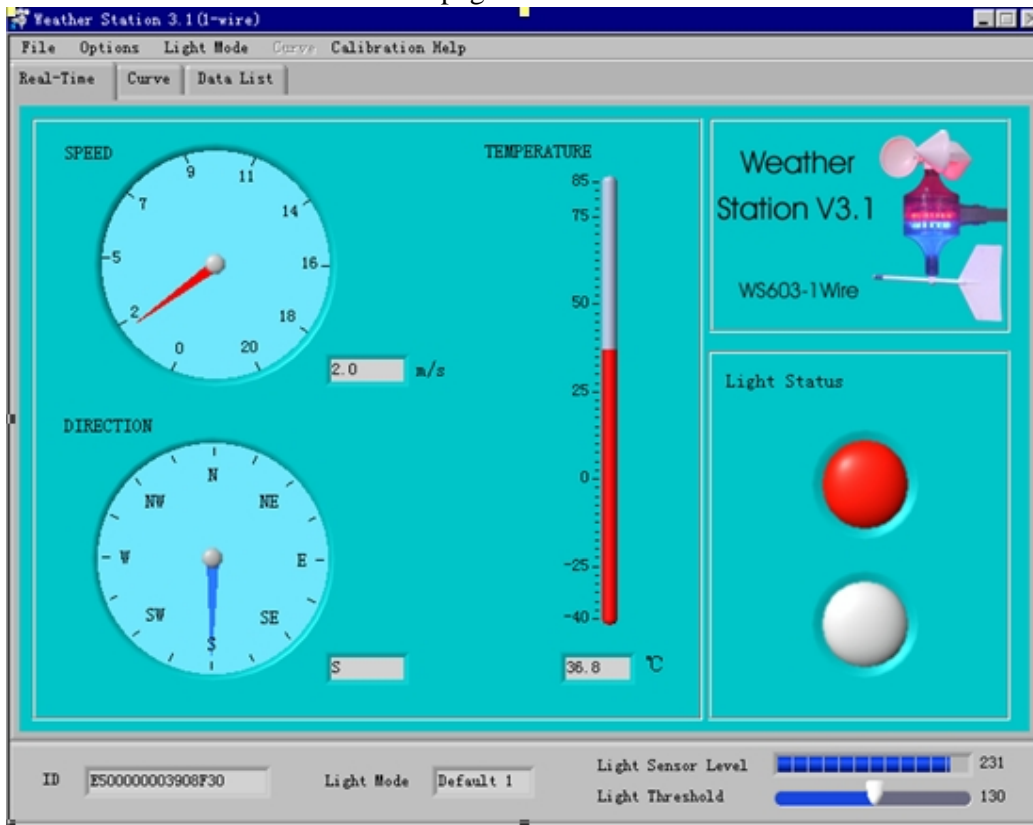
Weather Station 3.1(1-wire)

After completely install the software “Weather Station 3.1(1-wire)”. You can open the software from your computer. Follow picture 1.



Picture 1.

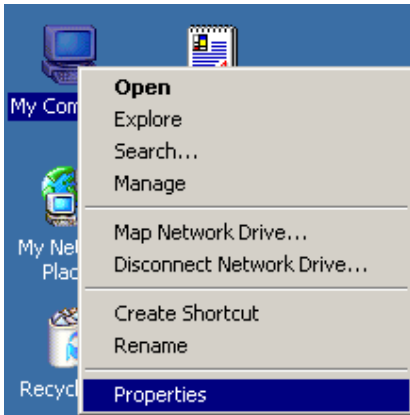
You can see the software main page with Picture2.



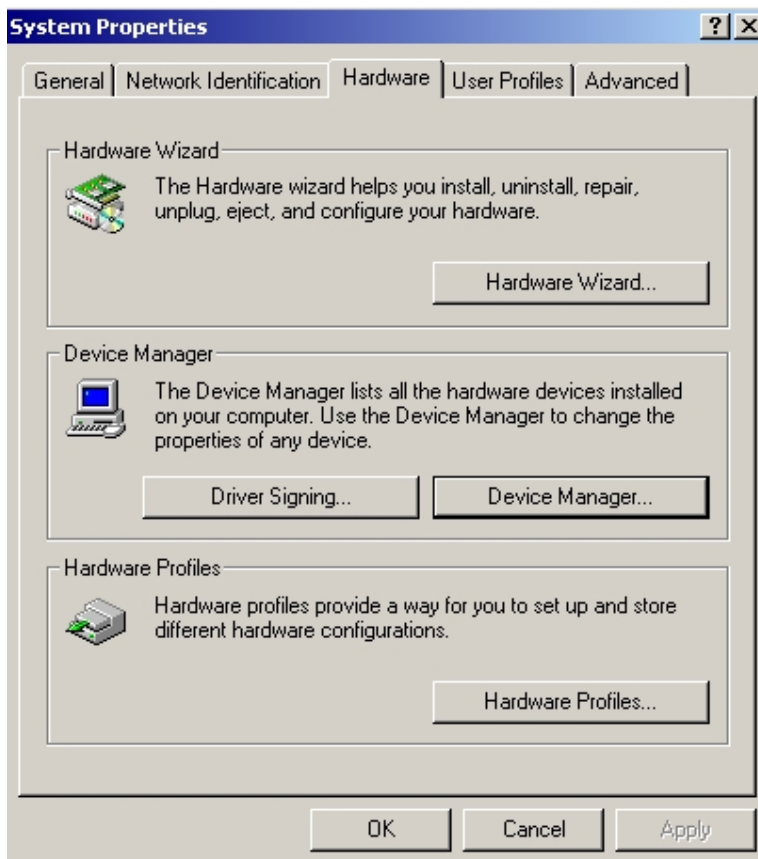
Picture 2.

You must select the correct serial port. After restart, the software will connect the weather station automatically.

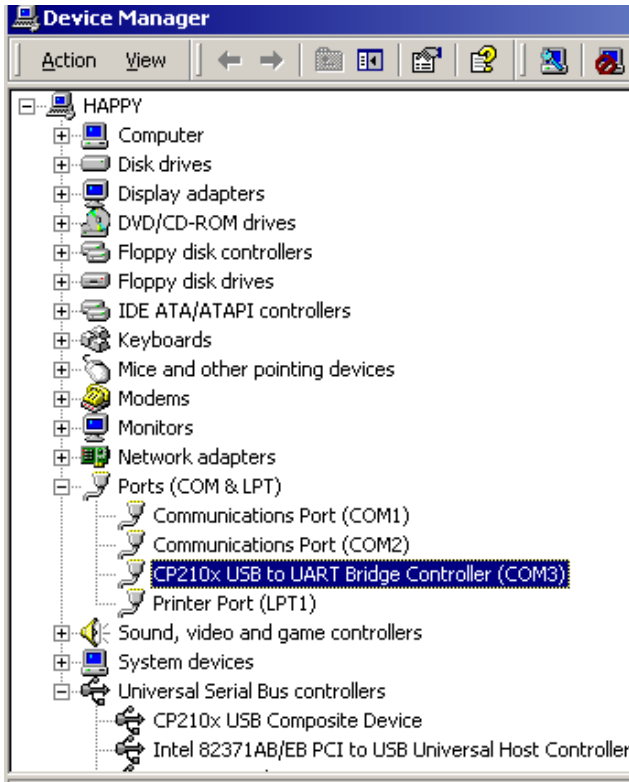
You can find a correct serial port by click the right key of your mouse on “My computer” and select Properties->Hardware->Device Manager->Ports. And you can find “Cp210x USB to UART Bridge Controller” in here. The follow port name is the USB virtual serial port.



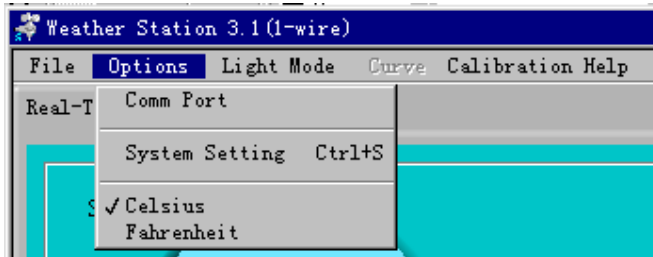
Step 1



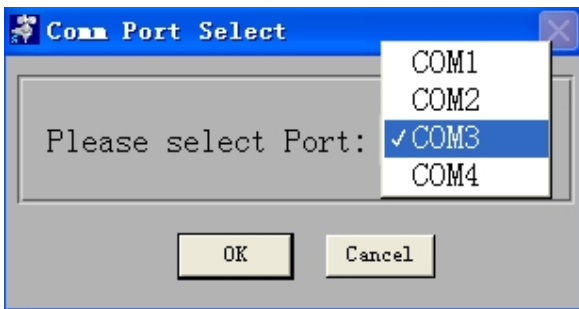
Step 2



Step 3



Step 4

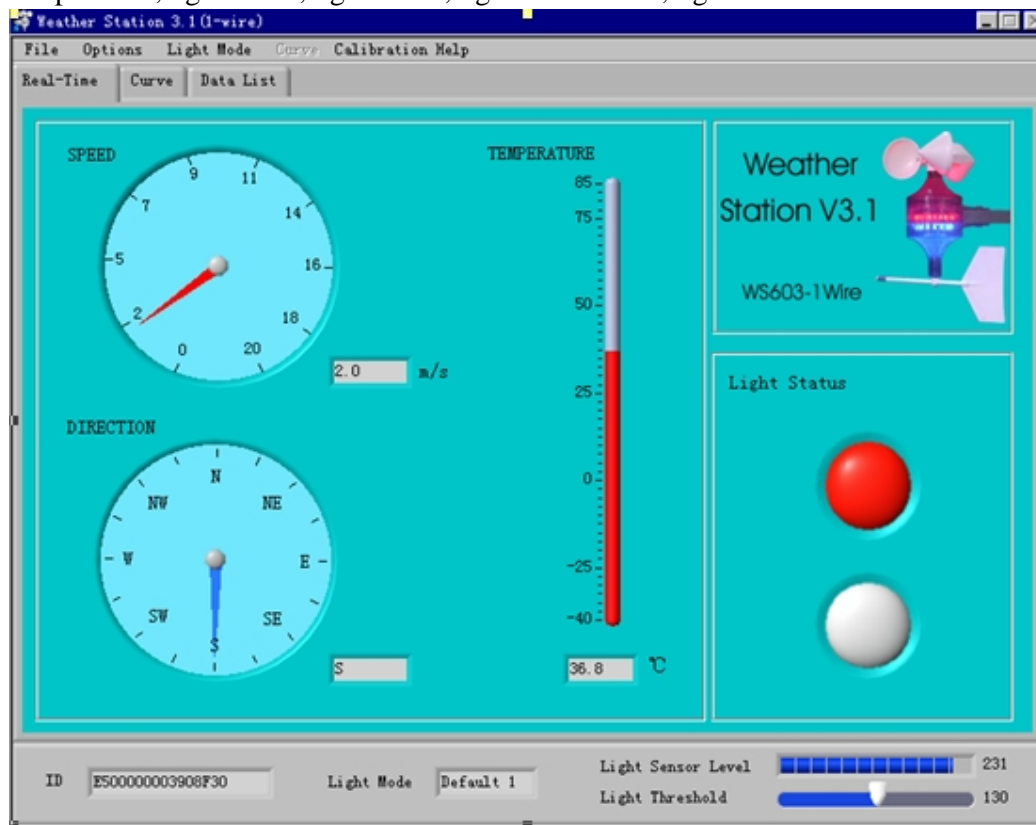


Step 5



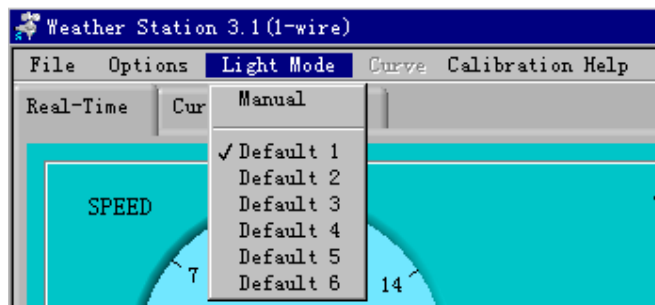
Step 6

When the software connect the weather station successfully. It can read the weather station parameter. Include Station ID, Wind speed, wind direction, temperature, light mode, light status, light sensor level, light threshold.



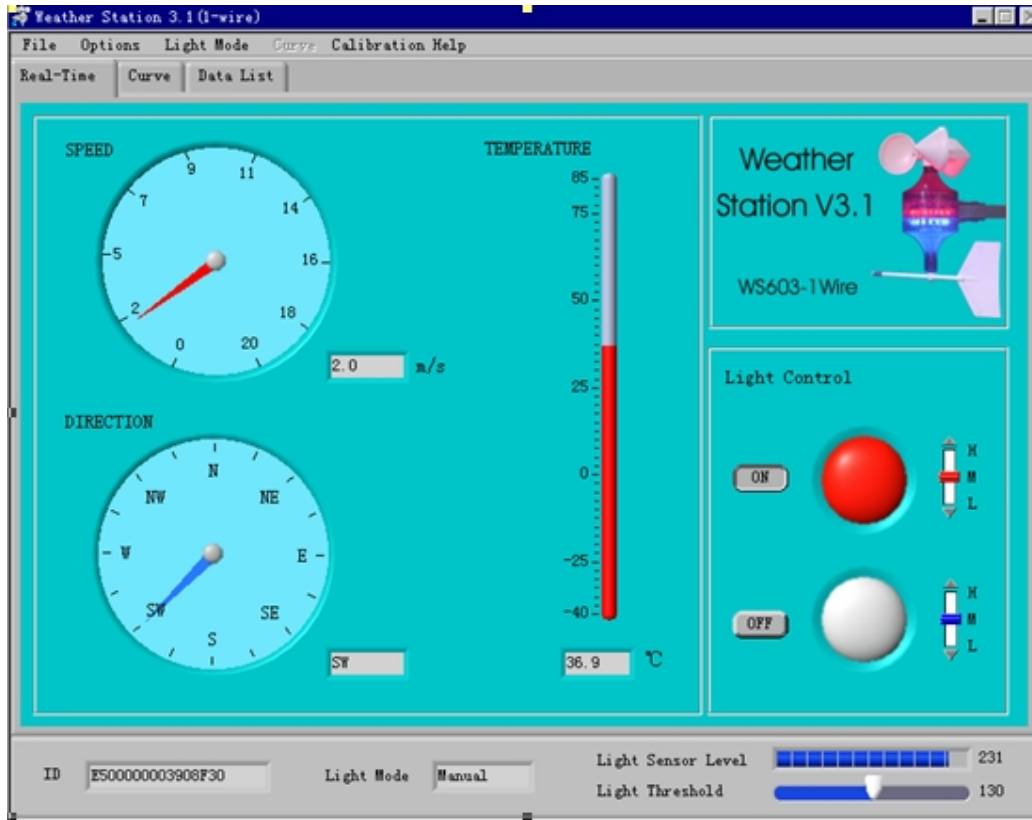
Picture 3.

Also you can select the light mode with manual or the default mode to control two of the LED arrays. The upper LED array's color is red. And the downer LED array's color is blue. Follow picture 4.



Picture 4.

When system is running with manual mode. You can control two of LED arrays by click the ON/OFF button on the light control panel. The upper ON/OFF button is to control the red LED array. And the downer ON/OFF button is to control the red LED array. You also can change the LED intensity by dragging the intensity bar. Follow picture 5.



Picture 5.

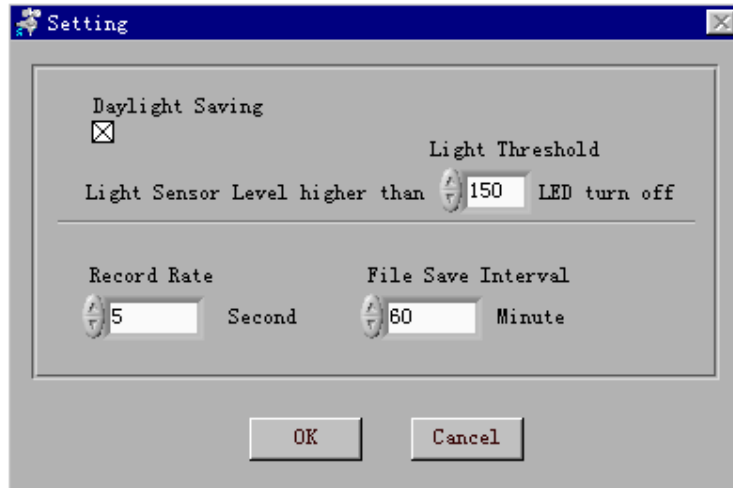
When system is running with default mode. The WSV3 will running and control the LED arrays with default cycle. System had six kinds of default modes. And you can use the system setting the WSV3's daylight saving parameter.

Daylight saving and light intensity can be used only system running with default mode. When you select system running with daylight saving the light threshold value must be setting. If "light sensor level" higher than "light threshold", it means that this time is daytime. Then system will running with day light saving mode, The LED will be turn off. If in nighttime, "light sensor level" is lower than "light threshold". Then system will be running with normal mode. The LED will be turn on or flash. If you don't need to turn off the LED, you can set the "light threshold" 255. "Light threshold" default value is 150. Light intensity setting can change LED light level, when system running with default mode.

Record rate means that how long the software record the weather station's data.

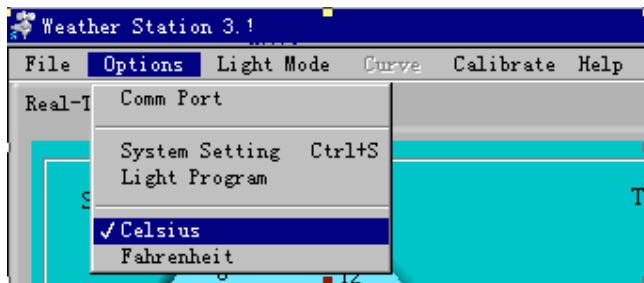
File save interval means that how long the software will save the record file.

Default is setting the weather station's parameter with initial value.



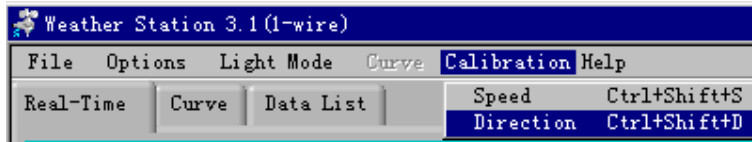
Picture 6.

In the options menu, you can select the Celsius or the Fahrenheit with temperature.



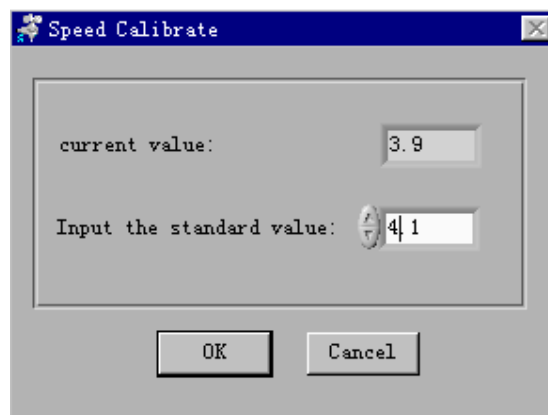
Picture 7.

If you need to calibrate the wind speed or the wind direction, you may follow picture 13.



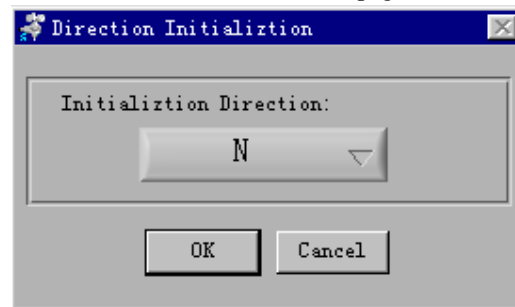
Picture 8.

When you select to calibrate wind speed, system will read a current wind speed value to the textbox, and you may input a current standard wind speed value to the next textbox, click OK button, then system will calibration automatically. And you can see the current wind speed value in main page will be changed.



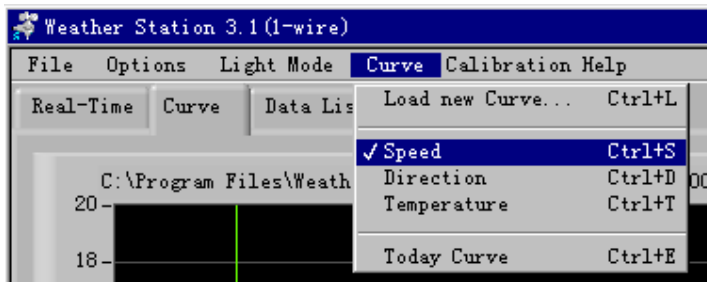
Picture 9.

When you select to calibrate wind direction, you just need to select a standard direction as current weather station direction, click OK button, then system will calibration automatically. And you can see the current wind direction value in main page will be changed.



Picture 10.

When you need to view the curve, you can select the curve panel, and select the speed, direction or temperature from the curve menu. Follow picture 11.



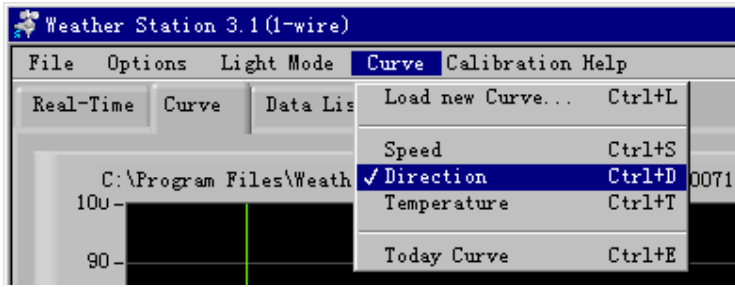
Picture 11.

Select the speed curve, that you can view the wind speed curve in the curve panel. Follow picture 12.

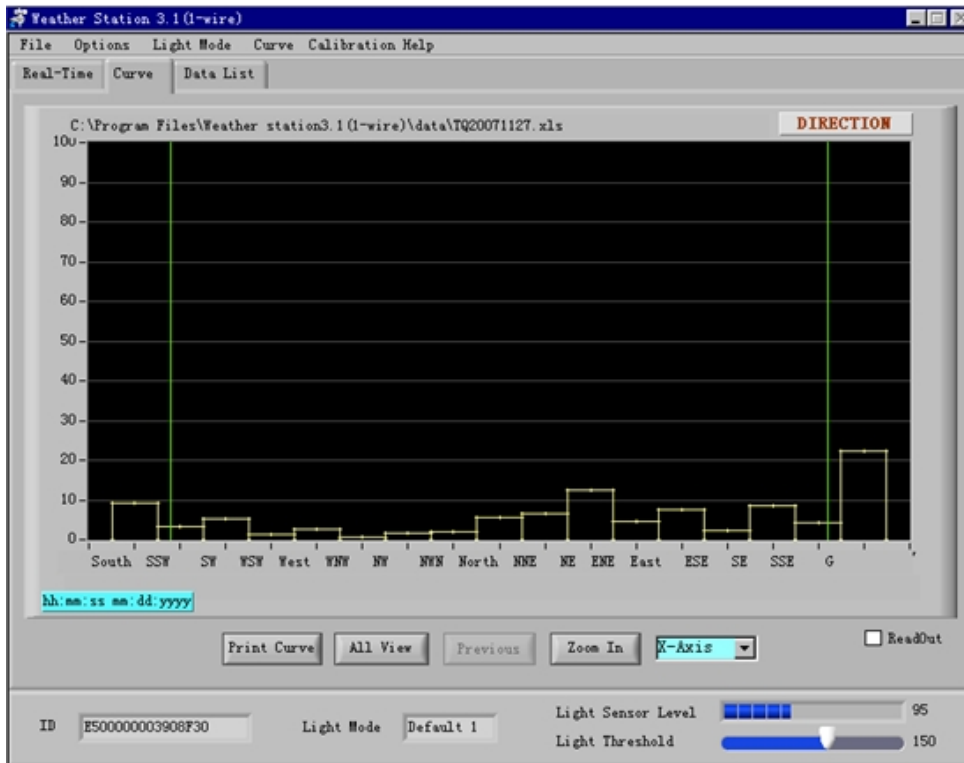


Picture 12.

Select the direction curve, that you can view the wind direction curve in the curve panel. Follow picture 13 and picture 14.

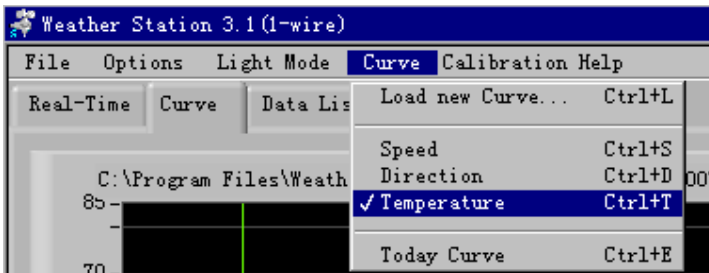


Picture 13.

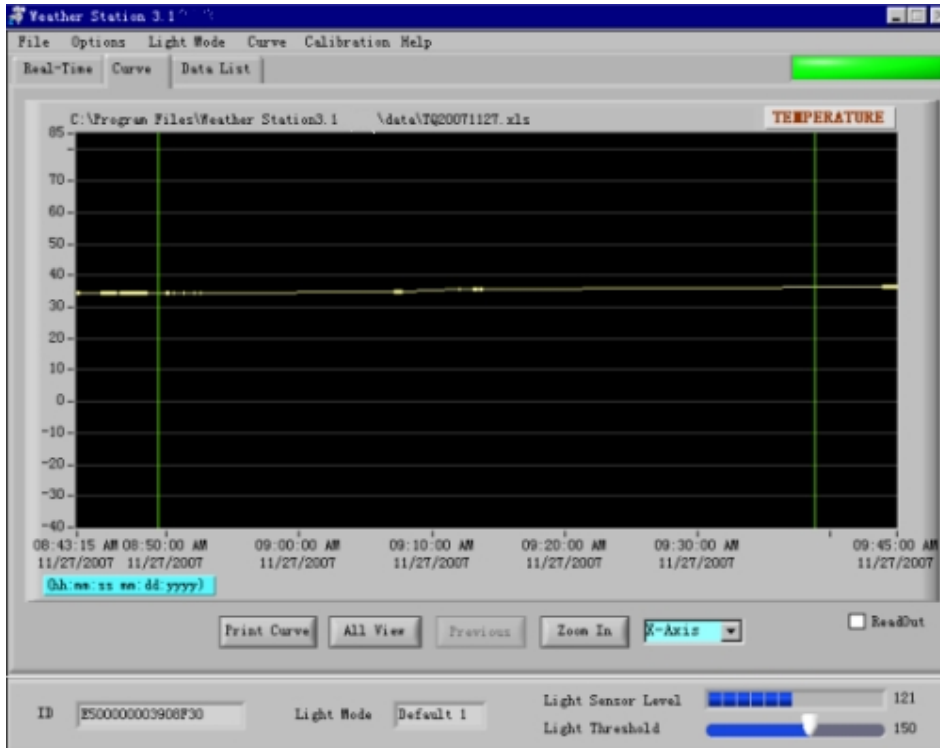


Picture 14.

Select the temperature curve, that you can view the wind temperature curve in the curve panel. Follow picture 15 and picture 16.

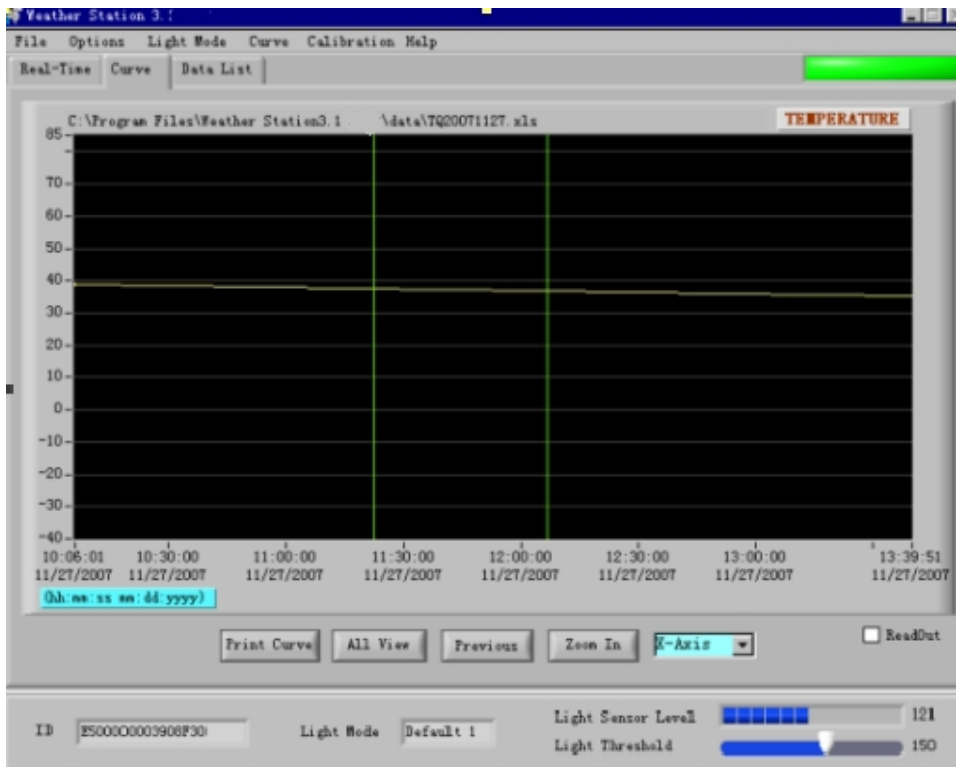


Picture 15.



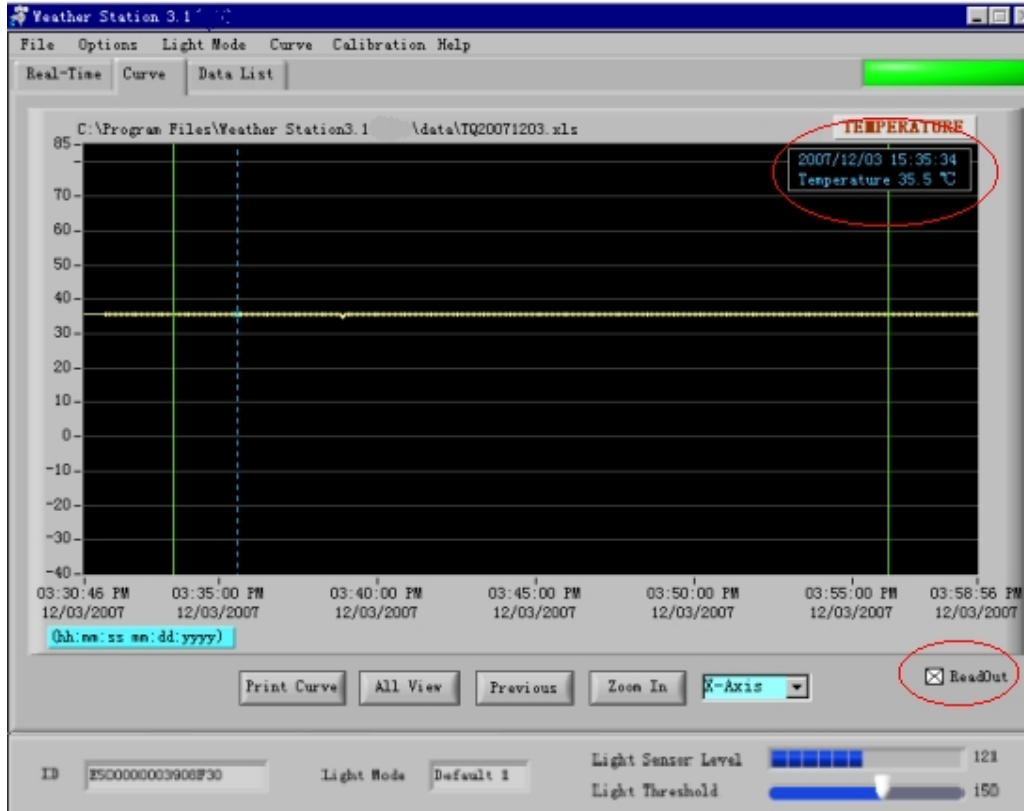
Picture 16.

You can see more detailed curve in the X-Axis by moving the two of green lines to select the window and click “Zoom In” button. Also you can do so in the Y-Axis.



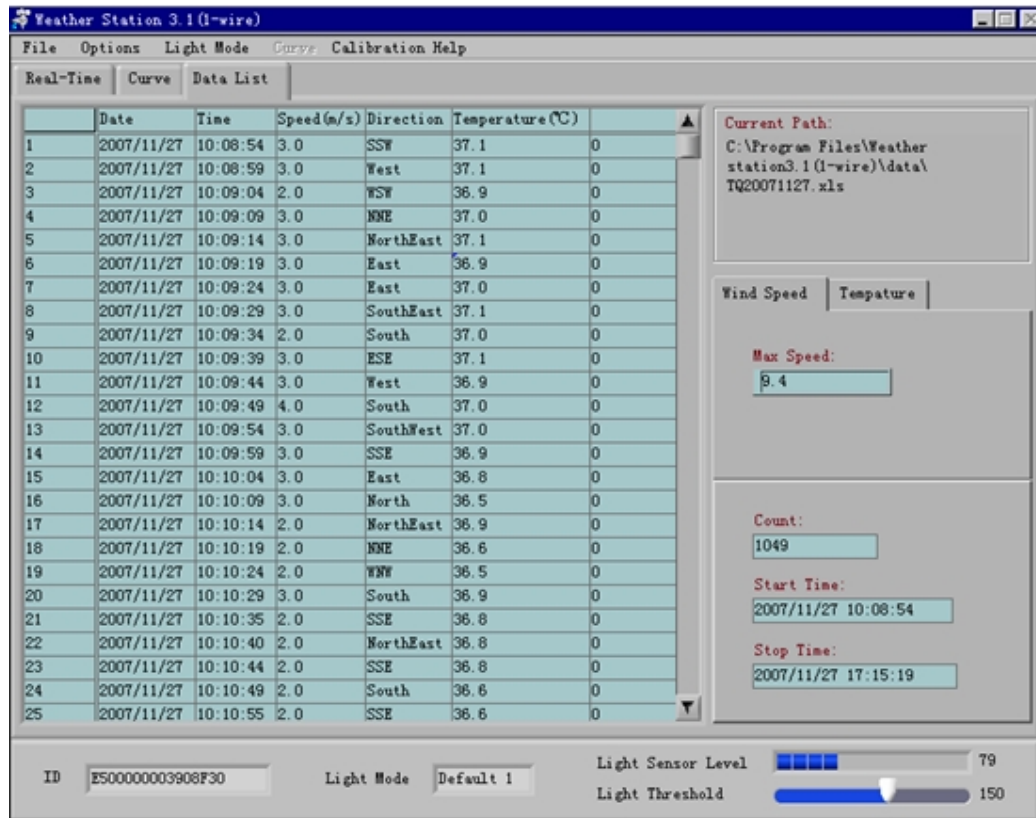
Picture 17

When you click to select the “ReadOut”. You can see a blue line on the left of the curve window. If you dragging the blue line with X-Axis, at the same time the read out data on the top right of the curve window is changing.



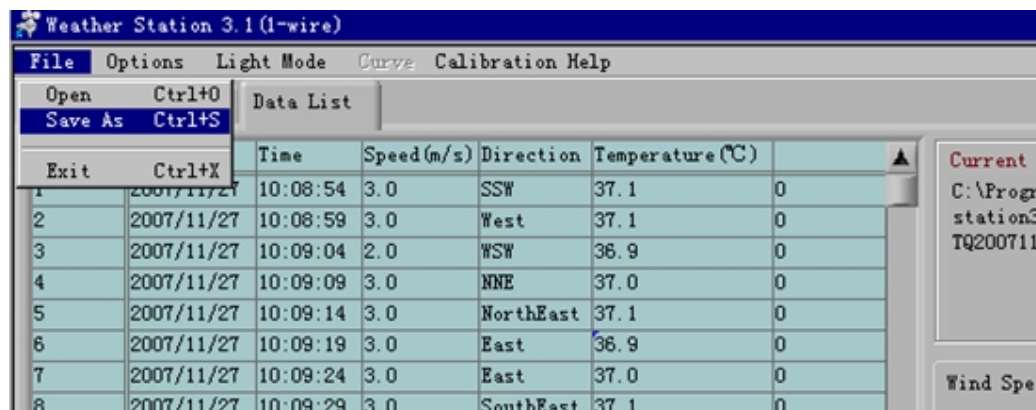
Picture 18

When you select the data list panel. You can view the record data list in this panel. Follow picture 19.



Picture 19.

You can save the record to another directory. And open data list file to view.



Picture 20.